



الريان  
AL-RAYAN

لمصاعد والسلالم المتحركة  
Elevators & Escalators

# COMPANY PROFILE 2024

الريان  
AL-RAYAN

# INTRODUCTION



**Al Rayan Elevator & Escalator** it's a Company that specializes in providing total solutions for all vertical transportation systems With A Team of experience over 20 years in managing sales, install & maintenance of elevators and escalators in the Middle East.

**Al-Rayan** Provides appropriate movement solutions with safety, reliability, and efficiency starting with low-rise buildings, and mid-rise buildings for the residential and commercial market segments & the high requirements and high-rise segments.

**Al-Rayan** established a division with the main object of providing consultancy to owners & consultant offices by making the traffic analysis study for all projects to comply with the international codes and To achieve the highest performance of the elevator's efficiency levels and suit building needs in terms of loads, speeds & providing the appropriate dimensions for elevators in the stages of pre-design to avoid problems in the design in the case of non-allocated to the elevators area agree with the elevator needs

**Al-Rayan** will engage in the trade, installation & servicing of moving systems.

Elevator

Escalators

Travelators

Smart Parking Systems

With a comprehensive range of products and services, we guarantee you complete satisfaction in terms of quality and price which **Al-Rayan** Team has provided throughout their service life for almost 20 years

All our employees, regardless of position, function, or location must adhere to the **Al Rayan** Code of Conduct.

# OVERVIEW



الريان  
AL-RAYAN

## *Total Solution Supplier To Create Optimal Movement*

### **Qatar Company Foundation**

---

2019

### **Factory**

---

South Korea

China

German

### **Branches**

---

Cairo, Egypt

Tripoli, Libya

Khartoum, Sudan

### **Personnel**

---

350 At All Branches

80 (In Qatar)

### **Local Address**

---

C Ring Road, Building, Building 236, 2<sup>nd</sup> Floor



# VISION & MISSION



## Vision

A leading company that delivers mobility and technology solutions worldwide with the highest level of efficiency and professionalism

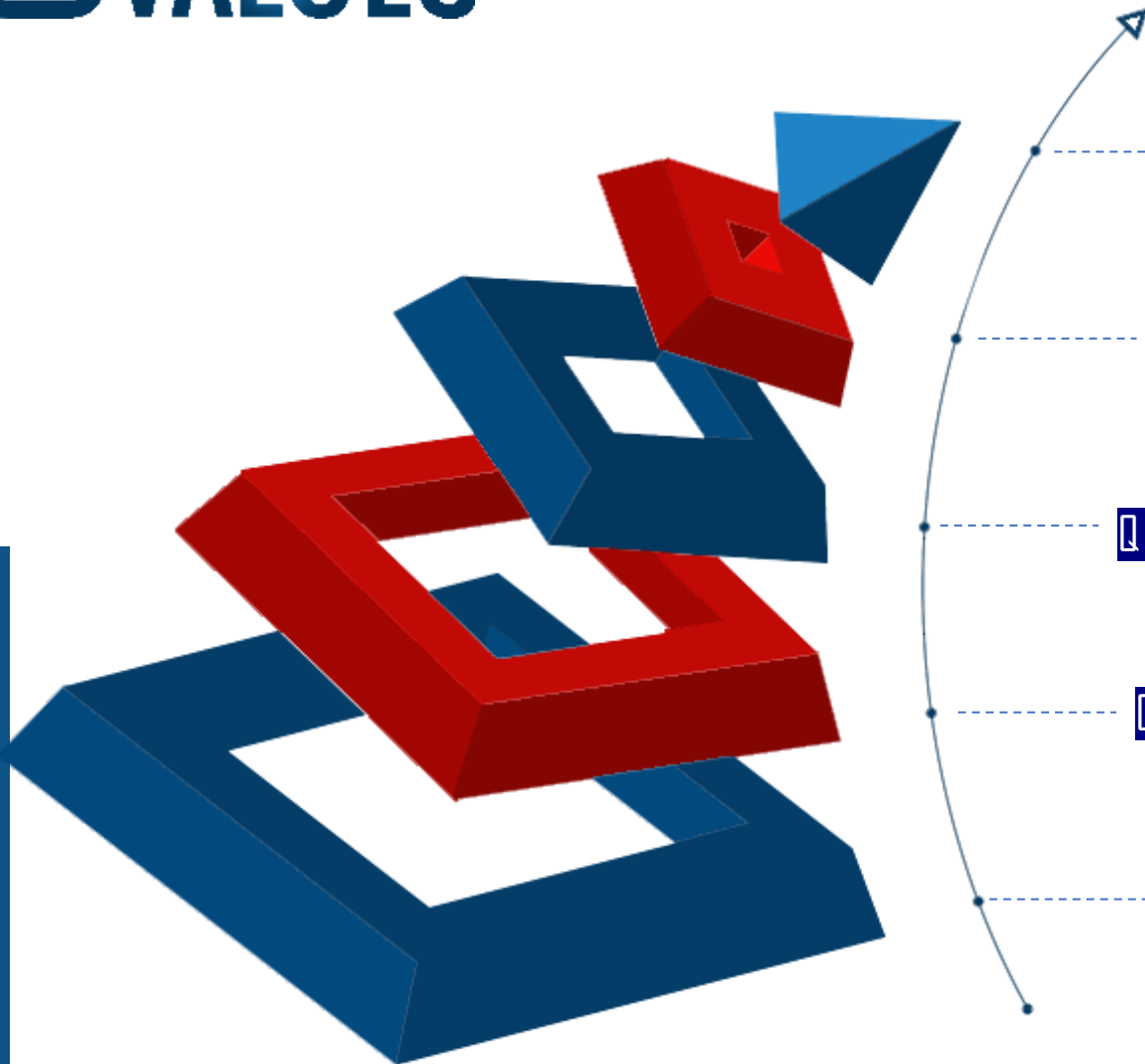


## Mission

Create a full line of technology solutions to moving system using the most advanced progressive designs in the industry and supplying our customers with complete satisfaction in terms of quality and prices



# OUR CORE VALUES



## SAFETY

Safety is the key element in our field of business, we at Al-Rayan puts Safety first at all our works

## INTEGRITY

Honesty and integrity govern all of our business dealings and customer interactions. We want our customers to have the full scope of their elevator functionality.

## QUALITY SERVICES

We are keen to provide cutting-edge technology to our customers by cooperating with the biggest company in the industry

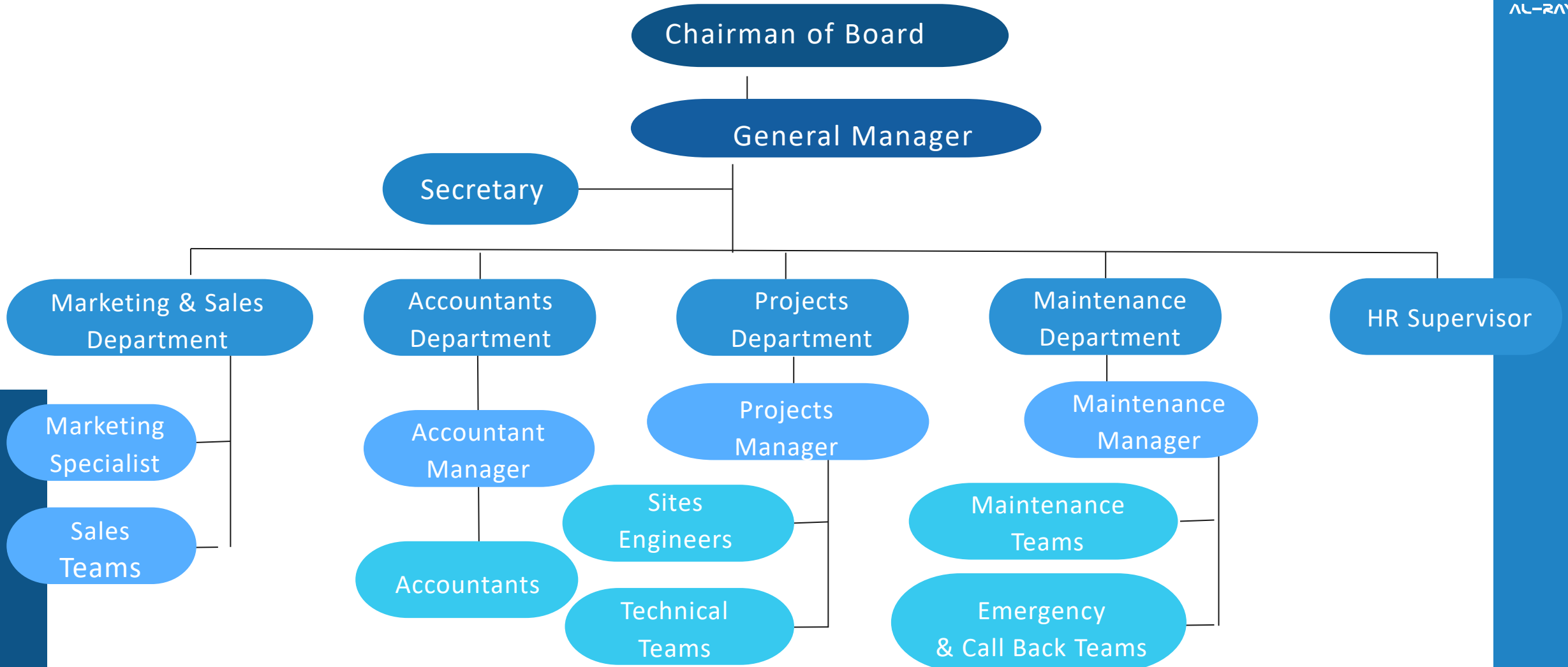
## CUSTOMER-CENTRICITY

Putting customer's needs first is our main core value to provide a positive experience and build long-term relationships

## TIME AND BUDGET BOUND

With our various brands, we make sure that we fulfill our client's needs and meet their budget

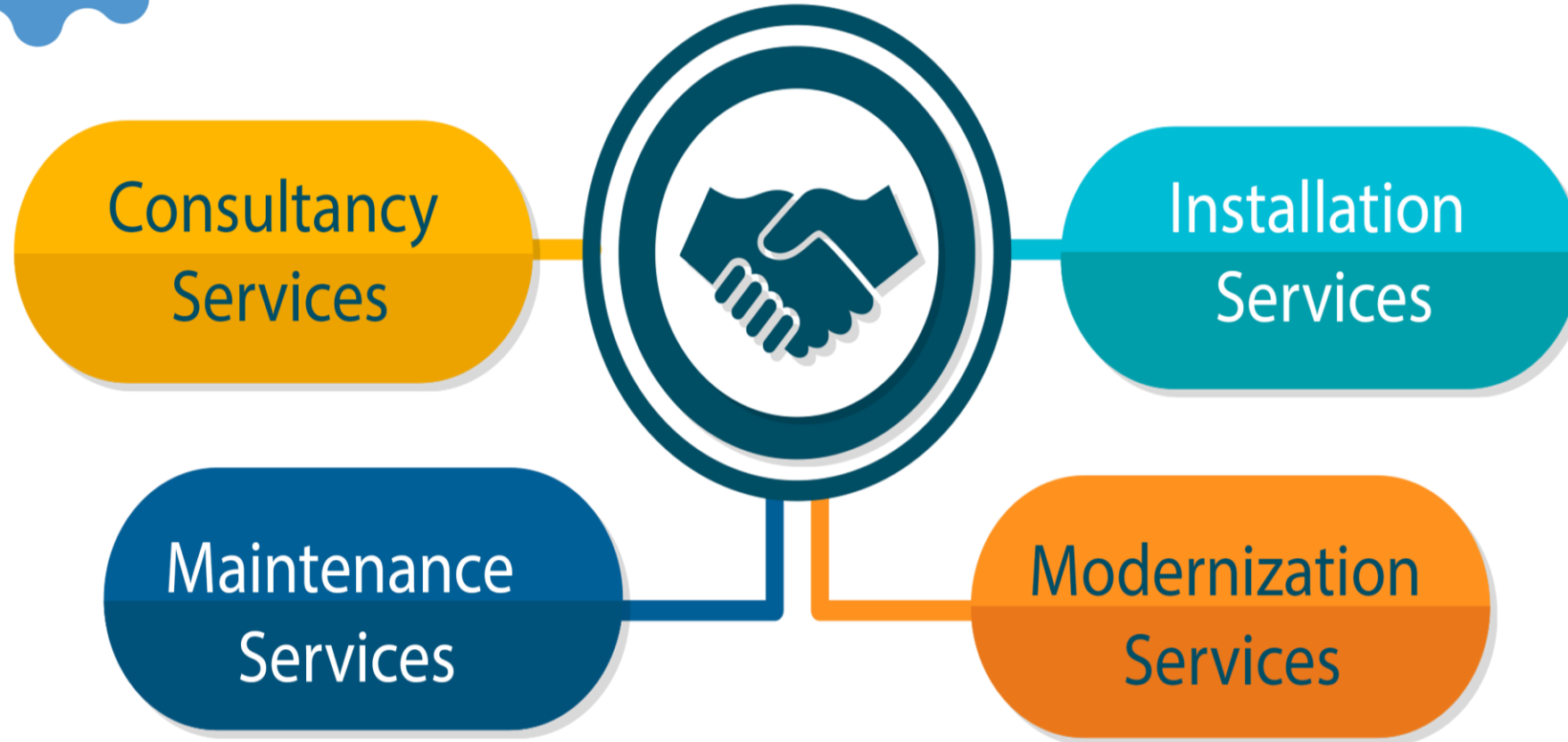
# ORGANIZATION CHART





# OUR SERVICE

## WHAT WE DO



DESIGN & ENGINEERING  
CONSULTANCY SERVICES



We at **Al-Rayan** proudly provide clients with consultancy services to meet their requirements with high efficiency



# INSTALLATION SERVICES



We specialize in the installation of all elevator systems either Traction or Hydraulic by teams with over 20 years of experience, for commercial, residential, industrial, and healthcare facilities in both new and existing buildings. We can accommodate the elevator installation requirements for any type of building and application.



We provide a full range of elevator maintenance services. Our Maintenance Crews are outfitted with the state-of-the-art tools and equipment needed to complete maintenance.. It's always the best decision to preempt problems by enrolling in our Preventive Maintenance Program. Our services will keep you operating in tip-top condition and, if needed, we are ready and available to repair damage caused by normal wear and tear. We are certified to replace obsolete parts and correct code violations.



## **ELEVATOR MODERNIZATION**

We Provides modernization to commercial & residential customers. By adding current technology, our technicians can bring your elevators into compliance with all applicable elevator code, and increase efficiency and performance and improve the appearance of your elevators. Not only will your passengers experience increased safety and comfort, but our services will extend the life of your equipment to help you get more from your initial investment

Our Partners







# SRH SAFE REACH



الريان  
AL-RAYAN



ISO 9001



TUV/ CE



Germany elevator Association



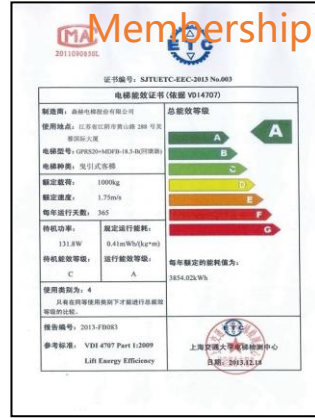
CU-TR



OHSAS 18001



ISO 14001



VDI A Energy Saving



CE



# ISO CERTIFICATION



# LG




**Certificate of Registration**

This is to certify that the  
**ENVIRONMENTAL MANAGEMENT SYSTEM**  
of  
**LGS ELEVATOR KOREA CO., LTD.**  
18-15, Tekeunobae11 1-Ro 92beon-Gil Jillye-Myeon, Gimhae-Si, Gyeongsangnam-Do, 50875, KOREA  
for  
**Design, manufacture and service of Elevators and related parts**  
has been assessed and registered against the provisions of  
**ISO 14001:2015**  
International Standard

with

Registration Number:	22E18295	Cycle Start Date:	11 September 2023
Project:	41-18295-3-E	Approval Date:	12 September 2023
		Issue Date:	12 September 2023
Certification Approved By:		Expiry Date:	11 September 2026
Doug Page-Symonds			
Chief Executive Officer			



This certificate remains the property of GCL International Ltd. Registration is subject to the Scheme Rules which are published at [www.gcl-int.com](http://www.gcl-int.com). Any misuse, alteration, forgery or falsification is an unlawful act. Please validate the authenticity of this certificate by visiting [www.gcl-int.com](http://www.gcl-int.com) or email to [certification@gcl-int.com](mailto:certification@gcl-int.com)

GCL INTERNATIONAL LTD  
Level 1, Devonshire House, One Market Place, London, W1J 8AJ, United Kingdom.  
**SIN: 80026359**  
**PIN: 31746954**

**ISO 45001**



**Certificate of Registration**

This is to certify that the  
**QUALITY MANAGEMENT SYSTEM**  
of  
**LGS ELEVATOR KOREA CO., LTD.**  
18-15, Tekeunobae11 1-Ro 92beon-Gil Jillye-Myeon, Gimhae-Si, Gyeongsangnam-Do, 50875, KOREA  
for  
**Design, manufacture and service of Elevators and related parts**  
has been assessed and registered against the provisions of  
**ISO 9001:2015**  
International Standard

with

Registration Number:	56Q18295	Cycle Start Date:	13 January 2023
Project:	41-18295-3-Q	Approval Date:	2 January 2023
		Issue Date:	2 January 2023
Certification Approved By:		Expiry Date:	13 January 2026
Doug Page-Symonds			
Chief Executive Officer			



This certificate remains the property of GCL International Ltd. Registration is subject to the Scheme Rules which are published at [www.gcl-int.com](http://www.gcl-int.com). Any misuse, alteration, forgery or falsification is an unlawful act. Please validate the authenticity of this certificate by visiting [www.gcl-int.com](http://www.gcl-int.com) or email to [certification@gcl-int.com](mailto:certification@gcl-int.com)

GCL INTERNATIONAL LTD  
Level 1, Devonshire House, One Market Place, London, W1J 8AJ, United Kingdom.  
**SIN: 80026310**  
**PIN: 18929508**

**ISO 9001**



**Certificate of Registration**

This is to certify that the  
**ENVIRONMENTAL MANAGEMENT SYSTEM**  
of  
**LGS ELEVATOR KOREA CO., LTD.**  
18-15, Tekeunobae11 1-Ro 92beon-Gil Jillye-Myeon, Gimhae-Si, Gyeongsangnam-Do, 50875, KOREA  
for  
**Design, manufacture and service of Elevators and related parts**  
has been assessed and registered against the provisions of  
**ISO 14001:2015**  
International Standard

with

Registration Number:	22E18295	Cycle Start Date:	11 September 2023
Project:	41-18295-3-E	Approval Date:	12 September 2023
		Issue Date:	12 September 2023
Certification Approved By:		Expiry Date:	11 September 2026
Doug Page-Symonds			
Chief Executive Officer			



This certificate remains the property of GCL International Ltd. Registration is subject to the Scheme Rules which are published at [www.gcl-int.com](http://www.gcl-int.com). Any misuse, alteration, forgery or falsification is an unlawful act. Please validate the authenticity of this certificate by visiting [www.gcl-int.com](http://www.gcl-int.com) or email to [certification@gcl-int.com](mailto:certification@gcl-int.com)

GCL INTERNATIONAL LTD  
Level 1, Devonshire House, One Market Place, London, W1J 8AJ, United Kingdom.  
**SIN: 80026359**  
**PIN: 31746954**

**ISO 14001**





# **PRODUCT**



**Elevator**

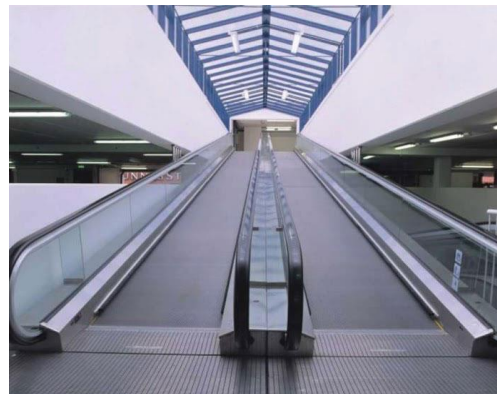
*We Supply, install high quality  
with best efficiency*

- Elevators
- Escalators
- Travelators
- Smart Parking system

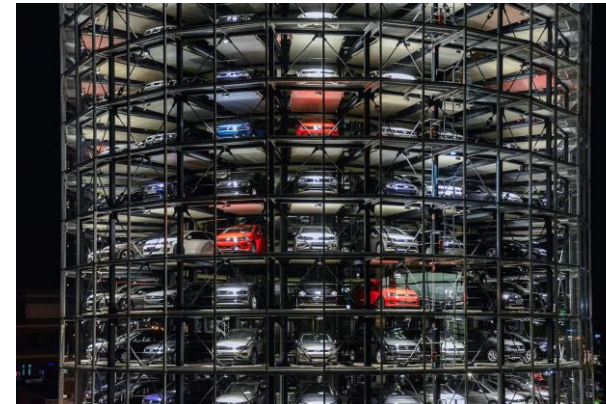
**Escalator**



**Travelators**



**Smart Parking System**





## Sicher Group:

- Sicher Elevator Co., Ltd.
- SRH Aufzüge GmbH (Germany)
- Siche Elevator (Shanghai) Co., Ltd.
- Sicher Colleague of Zhejiang Institute of Mechanical & Electrical engineering
- Zhejiang Sicher Elevator Institute
- Zhejiang United Elevator Co., Ltd.
- Zhejiang Sicher Imp. & Exp. Co., Ltd.
- Zhejiang United Imp. & Exp. Co., Ltd.
- Zhejiang Sicher Ecol- Agriculture Science & Technology Co., Ltd.
- Zhejiang Mico Investment Co., Ltd.



# Sicher Elevator Group





# Industry 4.0 –Sicher intelligent factories



# Sicher Product

Type	Product	SPECIFICATION	PRODUCING
MR Passenger Lift	GRVS GRPS 20 GRPS 30 GRPS 50 GRPS 70	CAPACITY : 250 - 5000Kg SPEED : 0.22m/s~0.4m/s, 1m/s~10.0m/s CONTROL : VVVF MOTOR : Geared, Gearless, Hydraulic	$V \leq 10.0\text{m/s}$
Observation	GRO	CAPACITY : 250 - 2000Kg SPEED : 0.22m/s~0.4m/s, 1m/s~4.0m/s CONTROL : VVVF MOTOR : Geared, Gearless, Hydraulic	$V \leq 4.0\text{m/s}$
MRL Passenger Lift	GRVN GRPN 20	CAPACITY : 250 - 3000Kg SPEED : 0.22m/s~0.4m/s, 1m/s~4.0m/s CONTROL : VVVF MOTOR : Gearless	$V \leq 4.0\text{m/s}$
Freight	GRZ GRF GRFH	CAPACITY : 50 - 50000Kg SPEED : 0.22m/s~0.4m/s, 1m/s~8.0m/s CONTROL : VVVF MOTOR : Geared, Gearless, Hydraulic	$Q \leq 50,000\text{kg}$
Hospital	GRB	CAPACITY : 800 - 5000Kg SPEED : 1m/s~10.0m/s CONTROL : VVVF MOTOR : Geared, Gearless, Hydraulic	$V \leq 10.0\text{m/s}$
Car elevator	GRA	CAPACITY : 3000KG SPEED : 0.25m/s~2.5m/s CONTROL : VVVF MOTOR : Geared, Gearless, Hydraulic	$V \leq 2.5\text{m/s}$

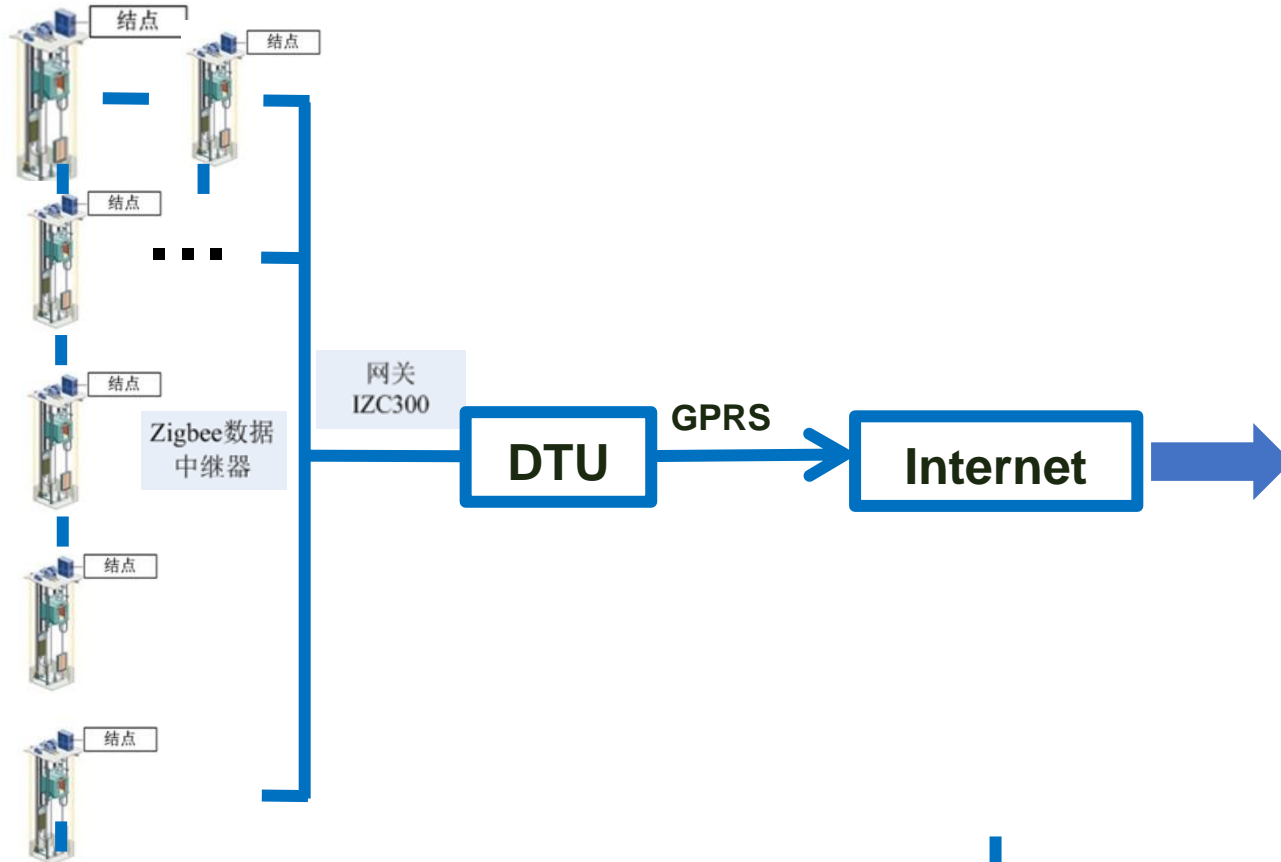
# Sicher Product

Type	Product	SPECIFICATION	PRODUCING
Fire-proof Lift	GRFP	CAPACITY : 250 - 5000Kg SPEED : 0.22m/s~0.4m/s, 1m/s~4.0m/s CONTROL : VVVF MOTOR : Geared, Gearless, Hydraulic	$V \leq 4.0\text{m/s}$
Escalator	GRE 20 GRE 30 GRE 50	STEP WIDTH: 600mm, 800mm, 1000mm SPEED : 0.5m/s, 0.63m/s Inclined Angle: 30°, 35° Rise Height : 1M~30M	Rise Height $\leq 30\text{M}$
Travellators	GRM 15 GRM 20	STEP WIDTH: 800mm, 1000mm, 1400mm SPEED : 0.5m/s, 0.65m/s, 0.75m/s Inclined Angle: 0°, 6°, 10°, 11°, 12° Length : 1M~120M	Length $\leq 120\text{M}$
Parking system	PXD, PPY PSH, PJS PCS, PQJ	Packing Lots : 2~500 Floor Number: 2~20	Lots $\leq 500$



# Sicher Remote Monitoring

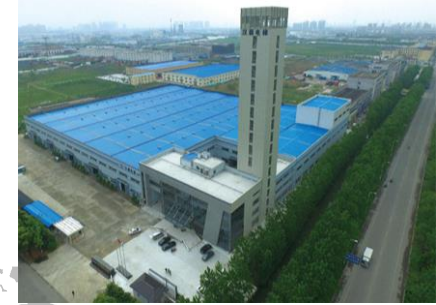
The technology of IOT on the basic of SICHER control system



Jobsites at Anywhere



Monitoring room at anywhere/ China/ Germany/Qatar



**South Korea  
Head Office & Factory**



**China Factory**

**All-in-one Capability for quick supply and response in service**



**Production Line for Motor**



**Motor inspection**



**Production line for safety Device**



**Production line for Wall & Door panel**



**Production line for Control Panel**



## All-in-one production

- Shortest delivery
- Stable harmony between parts



**P.M.S.M production line**



**Door panel production line  
(SALVAGNINI : Italy)**

**ERP system**  
(Enterprise Resources  
Planning)



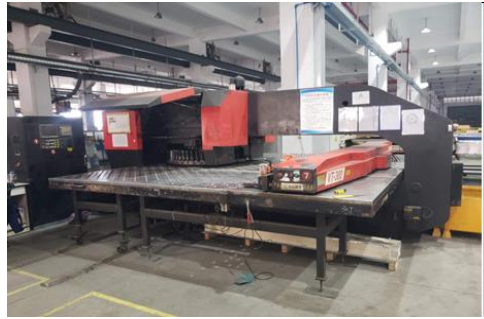
**PDM System**  
(Product Data  
Management)



**Painting line**



**Control panel production Line**





# Intelligent Upgrade Innovative production Base

# FUJI®

Sino-Japan Joint Venture

- Italy imported SALVANI flexible sheet metal processing production line
- Fiber laser cutting machine production line
- Spraying Line (German WAGNER Spraying Room)
- A corner of the production workshop
- Escalator production workshop
- Optical fiber laser cutting machine production line
- CNC bending machine
- Car wall automated assembly line



KUKA robot in Germany

As a modern large-scale manufacturing base with large scale and advanced machinery and equipment in Zhejiang Province.

The company has introduced a series of world-advanced fully automated production lines such as Salvagnini, which will fully realize the intelligent production of Industry 4.0, and also demonstrate the company's solid achievements in "machine substitution".

It has achieved an annual production capacity of 50,000 sets of various elevators, 5,000 sets of three-dimensional parking garages and 20,000 sets of elevator accessories.



الريان  
AL-RAYAN

# ELEVATORS



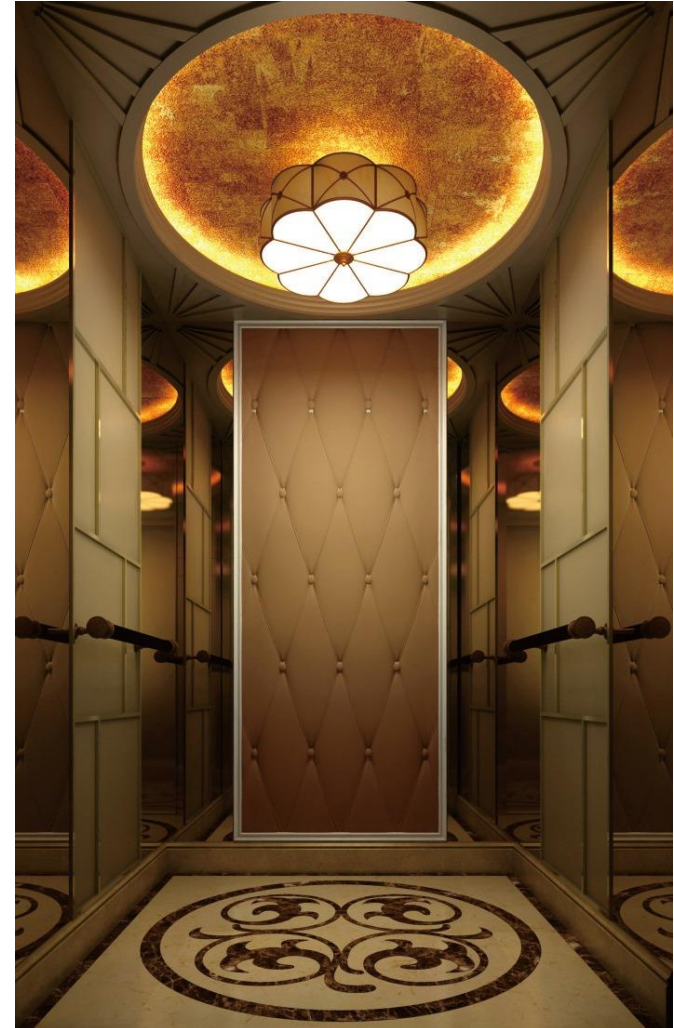


## PASSENGER ELEVATOR

### Bringing People and Elevators Closer

As the Elevator is the main transportation method in all buildings, We make Sure that Our Passenger Elevators are planned, designed and manufactured, to ensure

- \* Passengers security and convenience
- \* Guarantee a pleasant and comfortable ride



# HOME ELEVATOR

- We are one of the few lift companies who provide tailor-produce customize solutions to meet the specific wishes, desires, dreams and needs of our clients,
- The Homelift is not only making life easier for many people, but it also offers a wide range of possible solutions: classical and modern forms, different finishes and special designs. Of course, it's available with various car dimensions and with doors suitable for wheel-chairs.
- Can be installed both inside and outside the building
- Can easily fit it in hoistways and stairwells with small spaces
- Suitable for new buildings or for already existing houses
- Very silent operation
- Very low power consumption
- Ecological
- Very little maintenance
- Can be evacuated in emergency cases (blackout)



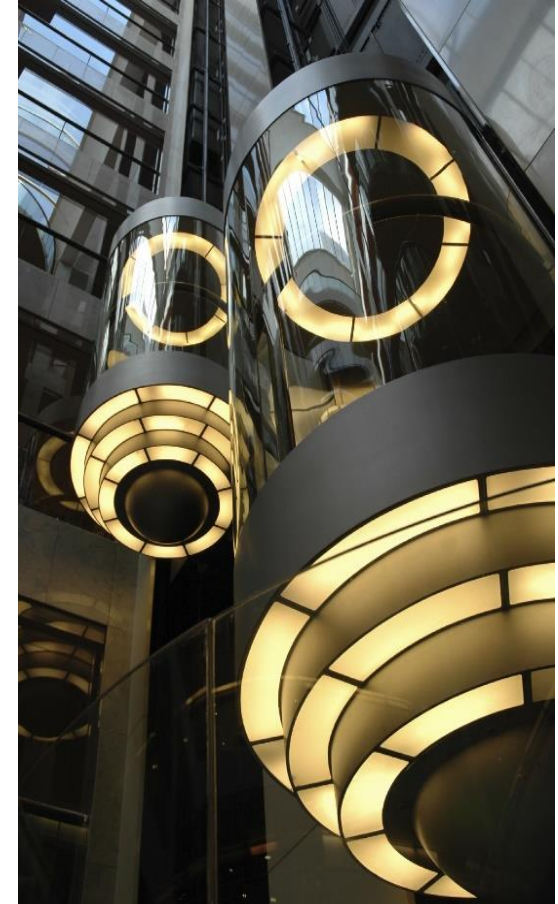
الريان  
AL-RAYAN

## OBSERVATION ELEVATOR

### Elevator with comfortable and smoother experience

Observation elevators provide passengers with an open view of the building or city landscape through transparent glass walls.

- Various options for the observation window include
- One Side
- Two Side
- Three Side
- Semicircular
- Key Hole
- Glass Walled
- Full Circle





## HOSPITAL ELEVATOR

### Elevator with most secure and reliable ambience that hospital requires

Hospital Bed Elevators are planned, designed, and manufactured, bearing passengers' security and convenience first in mind. The elegant designs and various features that these elevators show off are the key to enhancing the dignity of hospital facilities in addition to providing the amenities that the hospital pursues.

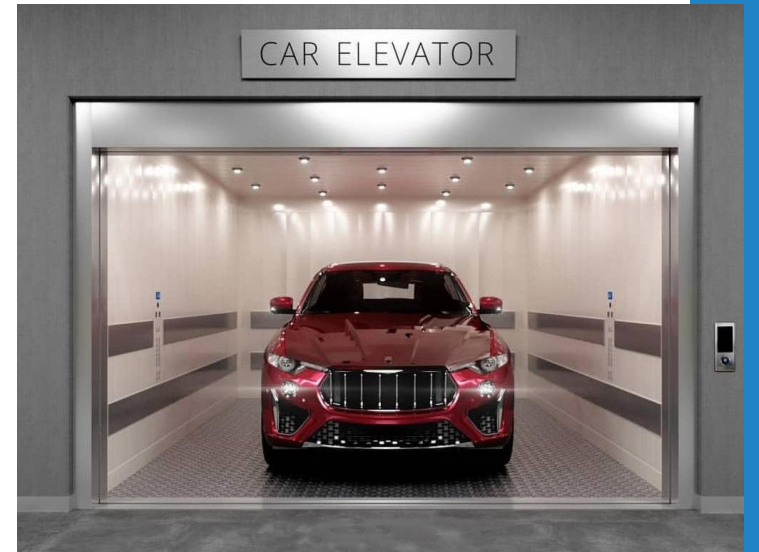


## FREIGHT & CARS ELEVATOR

### Designed Using state-of-the-art technology

We provide a wide variety of freight and automobile elevators. The reliability and sturdiness of which have been well-proven through stringent tests at the factory and decade-long experience in field engineering.

Our Automobile Elevators are designed to give great convenience to automobile drivers by reducing the time to find parking spaces which becomes less and less available in a crowded urban life. A wide range of models of Our Freight Elevators are designed to handle from lightweight cargoes to heavy loads such as forklifts.







الريان  
AL-RAYAN



# ESCALATORS

---



You can safely trust Our Partners Escalators . We provide three precise escalators that are in perfect harmony with the surrounding space millennium escalators, suitable for hotel, department store, and office use; modular escalators, suitable for subway stations and airport terminals; and our H-Series escalators, suitable for international airports, subway stations and major sporting facilities



**Escalator**

The diagram shows a central orange circle containing the word 'Escalator'. Two purple lines extend from the right side of the circle, pointing towards the two sets of technical specifications on the right side of the slide.

**Width(mm): 600 / 800 / 1000**

**Vertical Rise(mm): 2000 ~ 10500**

**Inclination: 30° / 35°(up to 6000)**

**Rated Speed: 30m/min**

**Width(mm): 600 / 800 / 1000**

**Vertical Rise(mm): 10500 ~ 20000**

**Inclination: 30°**

**Rated Speed: 30m/min**



# EXTERIOR VIEW





الريان  
AL-RAYAN





# TRAVELATORS

- Travelator are designed to reduce noise emission and provide a quiet and comfortable ambience and have been widely recognized for their safety and reliability at International Airport and other large scale transportation facilities Also, with simplified maintenance and repair, and energy conservation capabilities, our escalators provide the highest level of comfort and satisfaction in horizontal movement.

**Travelator**

**Inclined  
Type**

**Inclination: 10° / 12°**

**Rated Speed: 30m/min**

**Width(mm): 800 / 1000**

**Horizontal Distance(mm): 9110 ~ 80000**

**Inclination: 0°**

**Rated Speed: 30m/min**

**Inclination: 10° / 12°**

**Rated Speed: 30m/min**

**Width(mm): 800 / 1000**

**Horizontal Distance(mm): 9110 ~ 80000**

**Inclination: 0°**

**Rated Speed: 30m/min**

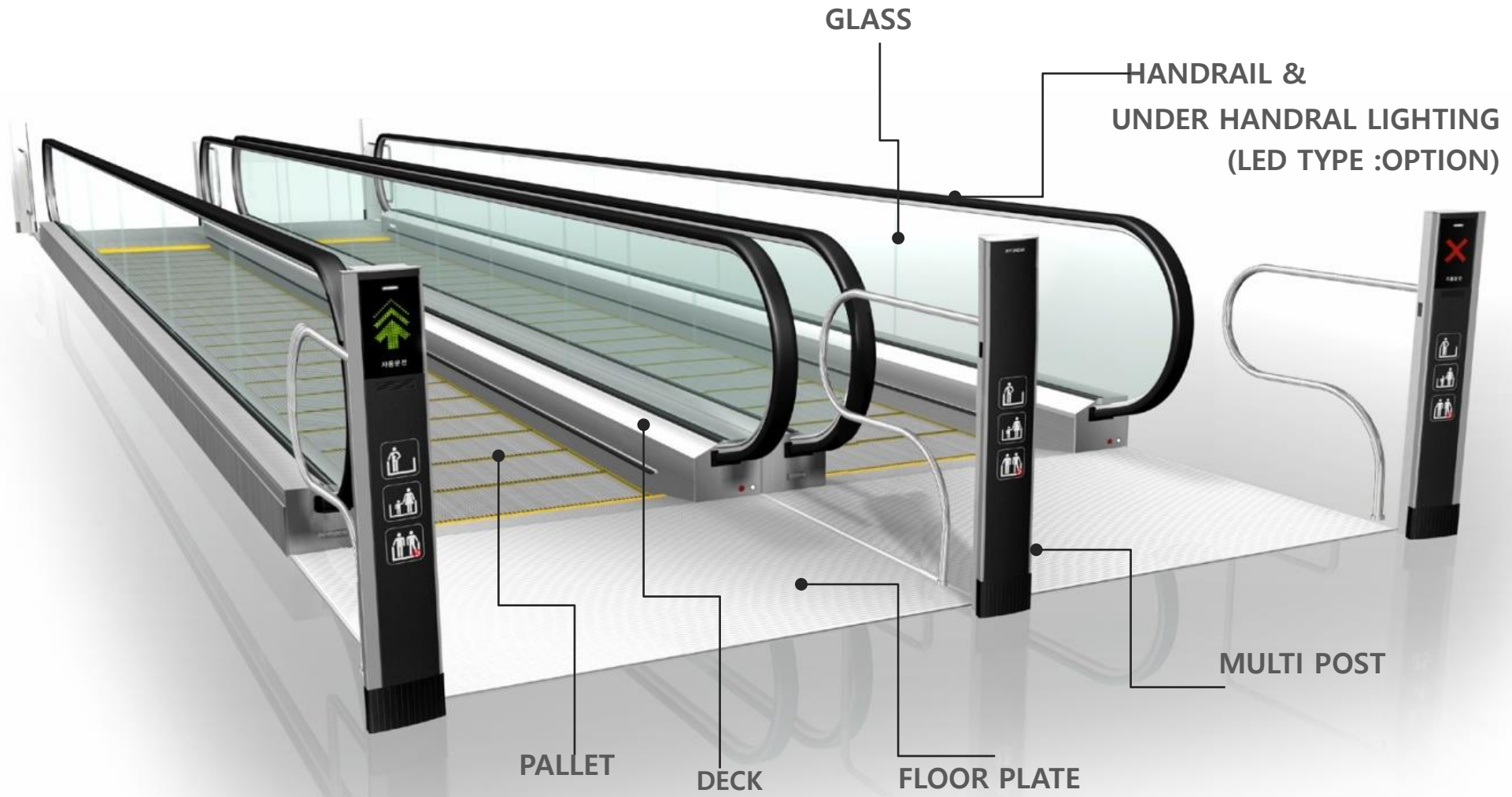
**Horizontal  
Type**







الريان  
AL-RAYAN







الريان  
AL-RAYAN



# Why we need Smart Parking system?



- 
1. Space Efficiency
  2. Property Value Up
  3. Clean City(Traffic & Road)
  4. Security
  5. Easy to find car
  6. Green Evolution



# Types Of Smart Parking

## Tower Parking



## Grand parking - Pallet Type



## Grand parking – Pallet-less Type



## Rotary Parking



## Multi circulation Parking



## Puzzle Parking



# Advantages of the ACPS compared to Conventional Parking



## Offers Compact Parking

- ❑ Its uses the available space 1.5 times more efficiently than conventional parking .
- ❑ It offers compact parking in limited space.



## Convenient System for driver

- ❑ The driver does not need to walk around the parking lot to retrieve his car.
- ❑ There is no need to search for an empty space.
- ❑ It is compatible with valet parking



## Save Costs, time & fuel

- ❑ Costs for construction work, civil work, fire-fighting work, equipment work (ventilation and air-conditioner), lighting work, ...etc are reduced.
- ❑ Save time: the time required to park/retrieve parking process
- ❑ Save fuel: with less driving time during the parking process, fuel consumption will be reduced.



### Secure the safety of the drivers & their cars

- Eliminates the risk of car theft
- Prevents the car damage that can occur in conventional parking lots through minor collisions and accidents
- Eliminates the risk of damage or scratches to a parked car
- Ensures a safe and crime-free parking space



### Think if the environmental benefits

- Reduces emissions of CO<sup>2</sup> and other exhaust fumes
- Reduces the driver's inhalation of automobile exhaust fumes
- Reduces noise, as car engines do not need to run as long



## **AFTER SALES SERVICES**

The Maintenance of elevators & escalators is the responsibility of the company's Field Operation Department.

This Department is headed by the FOD Manager and reporting to him is the service supervisor who takes particular responsibility for the maintenance currently about 300 units in Qatar

Each lift under maintenance is assigned a route. There are 8 routes each having about 50 units and one maintenance mechanic services the lifts on the route. The service supervisor overseas works on the routes.

The services Mechanics carry out a continuous Program Of preventive maintenance on the units and their routes.

### **PREVENTIVE MAINTENANCE PLANS**

On each visit examiner carries out set maintenance routines, which are recorded on a log card kept in the controller of each lift. These are specifically drawn up for each type of equipment, typical examples can be provided.

#### **Maintenance Contracts**

These are offered to our clients usually on a comprehensive basis which includes genuine spare parts, routine servicing by Al-Rayan trained technicians, and 24-hour call-back service. And third-party insurance coverage.



الريان  
AL-RAYAN

للمصاعد والسلالم المتحركة  
Elevators & Escalators

# Company ISO Certificates



AL-RAYAN



# CERTIFICATE

This Certificate has been awarded to



**AL-RAYAN ELEVATOR & ESCALATOR**

Building No.236, 2nd Floor, Office No. 6 - C.Ring Road  
P.O.Box: 13321 Doha, Qatar

In recognition of the Organization's Management System  
which complies with

## ISO 45001:2018

(Occupational Health and Safety Management System)



Issue No.: 01

The scope of activities covered by this certificate is defined below

**Electro-Mechanical Works - Supply, Installation,  
Maintenance & Building Materials &  
General Construction**

EA Code:- 28 & 29

Certificate Number: SIS3303220152

Date of Initial Registration:	21 Jun	2022
First surveillance due on:	21 May	2023
Second surveillance due on:	21 May	2024
Expiry Date:	20 Jun	2025
Re-certification Due on:	21 May	2025

*Managing Director*



Key Subcontractor Office(SIS)- Quality Administration Consultancy, Post Box No.10495, Doha-Qatar  
Corporate Office(SIS)- SIS Certifications Pvt. Ltd., Unit No. 514, 5<sup>th</sup> Floor, Vipul Business Park,  
Sohna Road, Sector-48, Gurgaon-122018, Haryana, India.  
Email us -> [support@siscertifications.com](mailto:support@siscertifications.com), Web:- [www.siscertifications.com](http://www.siscertifications.com), Contact no--> 974 55529618  
The status of this certificate can be verified on <https://siscertifications.co.in/verify/>

Note: The certificate is the property of SIS Certifications & the validity of the Certificate is subject to the successful completion of Surveillance Audit on or before the due date. (In case Surveillance Audit is not allowed to be conducted, this Certificate shall be suspended and must be renewed immediately upon request.)

ISO 45001



# CERTIFICATE

This Certificate has been awarded to



**AL-RAYAN ELEVATOR & ESCALATOR**

Building No.236, 2nd Floor, Office No. 6 - C.Ring Road  
P.O.Box: 13321 Doha, Qatar

In recognition of the Organization's Management System  
which complies with

## ISO 9001:2015

(Quality Management System)



Issue No.: 01

The scope of activities covered by this certificate is defined below

**Electro-Mechanical Works - Supply, Installation,  
Maintenance & Building Materials &  
General Construction**

EA Code:- 28 & 29

Certificate Number: SIS330322Q150

Date of Initial Registration:	21 Jun	2022
First surveillance due on:	21 May	2023
Second surveillance due on:	21 May	2024
Expiry Date:	20 Jun	2025
Re-certification Due on:	21 May	2025

*Managing Director*



Key Subcontractor Office(SIS)- Quality Administration Consultancy, Post Box No.10495, Doha-Qatar  
Corporate Office(SIS)- SIS Certifications Pvt. Ltd., Unit No. 514, 5<sup>th</sup> Floor, Vipul Business Park,  
Sohna Road, Sector-48, Gurgaon-122018, Haryana, India.  
Email us -> [support@siscertifications.com](mailto:support@siscertifications.com), Web:- [www.siscertifications.com](http://www.siscertifications.com), Contact no--> 974 55529618  
The status of this certificate can be verified on <https://siscertifications.co.in/verify/>

Note: The certificate is the property of SIS Certifications & the validity of the Certificate is subject to the successful completion of Surveillance Audit on or before the due date. (In case Surveillance Audit is not allowed to be conducted, this Certificate shall be suspended and must be renewed immediately upon request.)

ISO 9001



# CERTIFICATE

This Certificate has been awarded to



**AL-RAYAN ELEVATOR & ESCALATOR**

Building No.236, 2nd Floor, Office No. 6 - C.Ring Road  
P.O.Box: 13321 Doha, Qatar

In recognition of the Organization's Management System  
which complies with

## ISO 14001:2015

(Environmental Management System)



Issue No.: 01

The scope of activities covered by this certificate is defined below

**Electro-Mechanical Works - Supply, Installation,  
Maintenance & Building Materials &  
General Construction**

EA Code:- 28 & 29

Certificate Number: SIS330322E151

Date of Initial Registration:	21 Jun	2022
First surveillance due on:	21 May	2023
Second surveillance due on:	21 May	2024
Expiry Date:	20 Jun	2025
Re-certification Due on:	21 May	2025

*Managing Director*



Key Subcontractor Office(SIS)- Quality Administration Consultancy, Post Box No.10495, Doha-Qatar  
Corporate Office(SIS)- SIS Certifications Pvt. Ltd., Unit No. 514, 5<sup>th</sup> Floor, Vipul Business Park,  
Sohna Road, Sector-48, Gurgaon-122018, Haryana, India.  
Email us -> [support@siscertifications.com](mailto:support@siscertifications.com), Web:- [www.siscertifications.com](http://www.siscertifications.com), Contact no--> 974 55529618  
The status of this certificate can be verified on <https://siscertifications.co.in/verify/>

Note: The certificate is the property of SIS Certifications & the validity of the Certificate is subject to the successful completion of Surveillance Audit on or before the due date. (In case Surveillance Audit is not allowed to be conducted, this Certificate shall be suspended and must be renewed immediately upon request.)

ISO 14001





الريان  
AL-RAYAN

للمصاعد والسلالم المتحركة  
Elevators & Escalators

# Some Consultant Approvals

Date	: 05/Mar/24	Submital No.:	
Project Name	: Residential Building 8+G+M+4 Alwakra	Customer	: Al FADHALA Contracting Company
<b>DESCRIPTION</b>	Material Submittal for 1 unit of LGS Brand	Drawing Ref.	
		Specs. Ref.	
		BOQ Ref.	
		B.S. Ref.	
Attachment	<input type="checkbox"/> Literature <input checked="" type="checkbox"/> Test Certificates <input type="checkbox"/> Samples		
<b>MANUFACTURER/SUPPLIER</b>	Name: LGS Elevator Korea Address: China Local Agent: Al-Rayyan Elevator & Escalator Company Post Box: 13321 Telephone No. 40010104 Fax No.		
<b>DELIVERY</b>	Production Period: <input type="text" value="50 days"/> Delivery Ex. Works: <input type="text" value="30 days"/> Total Delivery Time: <input type="text" value="90 days"/>		
<b>CONSULTANT COMMENTS</b>	(1) Approved <input type="checkbox"/> (4) Revise & Re-submit <input type="checkbox"/> (2) Approved as Noted <input type="checkbox"/> (5) Add'l Info Required <input type="checkbox"/> (3) Rejected <input type="checkbox"/> (6) Sample/ Test Required <input type="checkbox"/>		
<b>REMARKS</b>			
Signature	Date 05-03-2024		
CUSTOMER/ENGINEERING DEPARTMENT COMMENTS			
Signature	Date		
Approved by the Consultant and/or the Customer shall not relieve the Contractor of his obligation under the Contract, and the Contractor shall be solely responsible for the soundness and correctness of the submitted materials and documents.			

Date	: 7-AUG-2022	Submital No.:	
Project Name	: Commercial & Admin Building (Bas., Mez. & 1st Floor) & Residential Building (Gr. 1st & 2nd Floor)	Customer	: Golden towers Contracting
<b>DESCRIPTION</b>	Material Submittal for 8 units of Fuji Elevators	Drawing Ref.	A-110
		Specs. Ref.	
		BOQ Ref.	
		B.S. Ref.	
Attachment	<input type="checkbox"/> Literature <input checked="" type="checkbox"/> Test Certificates <input type="checkbox"/> Samples		
<b>MANUFACTURER/SUPPLIER</b>	Name: Fuji Address: China Local Agent: Al-Rayyan Elevator & Escalator Company Post Box: 13321 Telephone No. 40010104 Fax No.		
<b>DELIVERY</b>	Production Period: <input type="text" value="50 days"/> Delivery Ex. Works: <input type="text" value="30 days"/> Total Delivery Time: <input type="text" value="90 days"/>		
<b>CONSULTANT COMMENTS</b>	(1) Approved <input type="checkbox"/> (4) Revise & Re-submit <input type="checkbox"/> (2) Approved as Noted <input type="checkbox"/> (5) Add'l Info Required <input type="checkbox"/> (3) Rejected <input type="checkbox"/> (6) Sample/ Test Required <input type="checkbox"/>		
<b>REMARKS</b>	<p>No objection for the mentioned supplier.          -&gt; Submit Shop Drawing for approval.          -&gt; Lift finish shall be confirmed by client.          -&gt; provide Draft warranty letter.</p>		
Signature	Date		
CUSTOMER/ENGINEERING DEPARTMENT COMMENTS			
Signature	Date		
Approved by the Consultant and/or the Customer shall not relieve the Contractor of his obligation under the Contract, and the Contractor shall be solely responsible for the soundness and correctness of the submitted materials and documents.			

Date	: 05-Jun-24	Submital No.:	
Project Name	: Hotel Building B.C.E.Prior Al Soud Area	Customer	: Chahel Trading and Contracting Company
<b>DESCRIPTION</b>	Material Submittal for 4 units of LGS Brand	Drawing Ref.	
		Specs. Ref.	
		BOQ Ref.	
		B.S. Ref.	
Attachment	<input type="checkbox"/> Literature <input checked="" type="checkbox"/> Test Certificates <input type="checkbox"/> Samples		
<b>MANUFACTURER/SUPPLIER</b>	Name: LGS Elevator Korea Address: Korea Local Agent: Al-Rayyan Elevator & Escalator Company Post Box: 13321 Telephone No. 40010104 Fax No.		
<b>DELIVERY</b>	Production Period: <input type="text" value="50 days"/> Delivery Ex. Works: <input type="text" value="30 days"/> Total Delivery Time: <input type="text" value="90 days"/>		
<b>CONSULTANT COMMENTS</b>	(1) Approved <input type="checkbox"/> (4) Revise & Re-submit <input type="checkbox"/> (2) Approved as Noted <input type="checkbox"/> (5) Add'l Info Required <input type="checkbox"/> (3) Rejected <input type="checkbox"/> (6) Sample/ Test Required <input type="checkbox"/>		
<b>REMARKS</b>			
Signature	Date		
CUSTOMER/ENGINEERING DEPARTMENT COMMENTS			
Signature	Date		
Approved by the Consultant and/or the Customer shall not relieve the Contractor of his obligation under the Contract, and the Contractor shall be solely responsible for the soundness and correctness of the submitted materials and documents.			

Date	: 01/06/24	Submital No.:	
Project Name	: Residential Building 8+G+M+4 Alwakra	Customer	: Al Bahain Contracting Company
<b>DESCRIPTION</b>	Material Submittal for 1 unit of LGS Brand	Drawing Ref.	
		Specs. Ref.	
		BOQ Ref.	
		B.S. Ref.	
Attachment	<input type="checkbox"/> Literature <input checked="" type="checkbox"/> Test Certificates <input type="checkbox"/> Samples		
<b>MANUFACTURER/SUPPLIER</b>	Name: LGS Elevator Korea Address: China Local Agent: Al-Rayyan Elevator & Escalator Company Post Box: 13321 Telephone No. 40010104 Fax No.		
<b>DELIVERY</b>	Production Period: <input type="text" value="50 days"/> Delivery Ex. Works: <input type="text" value="30 days"/> Total Delivery Time: <input type="text" value="90 days"/>		
<b>CONSULTANT COMMENTS</b>	(1) Approved <input checked="" type="checkbox"/> (4) Revise & Re-submit <input type="checkbox"/> (2) Approved as Noted <input type="checkbox"/> (5) Add'l Info Required <input type="checkbox"/> (3) Rejected <input type="checkbox"/> (6) Sample/ Test Required <input type="checkbox"/>		
<b>REMARKS</b>			
Signature	Date		
CUSTOMER/ENGINEERING DEPARTMENT COMMENTS			
Signature	Date		
Approved by the Consultant and/or the Customer shall not relieve the Contractor of his obligation under the Contract, and the Contractor shall be solely responsible for the soundness and correctness of the submitted materials and documents.			



الريان  
AL-RAYAN

**ASPIRE** **ICON** **ICT**  
MATERIAL SUBMITTAL

Date: 24-Mar-20 NEW SUBMITTAL  RESUBMITTAL   
 Project Name: Proposed B+G Shooting Range Submittal No.: ICT-N216-MAT-MEC-002 R1  
 Project No.: N-216  
 Customer: Aspire

DESCRIPTION  
 Fuji  
 Drawing Ref. N/A  
 Specs. Ref. N/A  
 BOQ Ref. N/A  
 Attachment:  Literature  Test Certificates  Samples

MANUFACTURER/SUPPLIER  
 Name: Fuji  
 Address: China  
 Local Agent: Al-Rayan Elevator & Escalator  
 Post Box: 13321 Doha Qatar Telephone No.: Fax No.:

The Contractor certifies that the submitted items have been reviewed in detail and are correct and in strict conformance with the Contract documents except as otherwise stated.

For the Contractor:  
 Eng. Ahmed Saad - ICT PM Date: 24-03-2020

CONSULTANT COMMENTS  
 (1) Approved  (4) Review & Re-submit  (7) Hold / Supplier   
 (2) Approved as Noted  (5) Add'l Info Required  (8) Clarification Required   
 (3) Rejected  (6) Sample Test Required  (9) Others

REMARKS  
 - From electrical Point of view (no objection)  
 - All installation to be a Comply with km & international standard  
 - For samples "physical sample for floor finishing & Bottoming to be submitted to Architect & client for their approval"  
 2/12/20

Signature: Date: 24

CUSTOMER/ENGINEERING DEPARTMENT COMMENTS  
 Signature: Date:

Approval by the Consultant and/or the Customer shall not relieve the Contractor of his obligation under the Contract, and the Contractor shall be solely responsible for the soundness and correctness of the submitted materials and documents.

WS-PSF-11-01A Template 01-Mar-2016, 2016a. ICT-N216-MAT-MEC-002 R1 Job Page 1 / 1

**DSG** **EZDAN** **W.L.L.**  
 Document Submittal

From: Sak contracting Ref. No.: CIV-DS-00085  
 To: Supervision department Contractor: Sak contracting  
 Attention: DSG W.L.L. Contractor's Rep: Adel Almasoud Contact No.:  
 Project: Ekdan Central Park 2 Signatures: Date: 6/4

Subject: Elevators drawings

Discipline Involved:  Mechanical  Electrical  Interior Design  Other:  
 For Information  For Amendment  As Requested  
 For Review & Comments  For Approval  Other

Item	Document No.	Rev.	Document Title	Issue Type	Media	C
			drawings of elevators			

Status  
 A - Approved  C - Review & Resubmit  E - Sample Required/Pick-up necessary  
 F - Approved as Noted  D - Additional Info Required  F\* - Other

Consultant's Comments  
 1) THE APPROVAL ARE SUBJECT OF THE STIPULATED COMMENTS IN THE ATTACHED STOP DRAWING.  
 2) ENSURE THAT INSPECTION POINTS (IP) SHALL BE UNHINDERED TO CONDUCT VISUAL INSPECTION TEMPORARY PROVISION AS WELL AS PERMIT TO GRAB SPECIMENS FROM ONE TO FIVE TO CONDUCTING.  
 3) CHECKED ELEVATOR STATION (EVS) SHALL BE NOTE TO CHECK ALL DEBS

Consultant Representative: Adel Almasoud Site: Sak Date: 04/03/2021  
 Consultant: Adel Almasoud MR. YOUSSEF BUA Date: 06/04/2021

Owner: Engineering Department Comments (if applicable)

06 APR 2021

**fd consult** **FAST**  
 SUB-CONTRACTOR SUBMITTAL FORM

09 VILLA PROJECT (Dr. ALI MEHSIN A R FETAIS)

Project No.: FIS/CON/2020/001 Ref. No.: FIS/DC-PRE-ELE-001 Rev.: 00 Date: 19-01-2021

M/A: FD Consult  
 Attention: Eng. Camille Ghorayeb - Projects Director  
 Discipline: ELECTRICAL Purpose of Submission:  for approval  for information

SUB-CONTRACTOR DETAILS  
 SUB-CONTRACTOR NAME: Al-Rayan - Fujii - Prequalification  
 SUB-CONTRACTOR ADDRESS: P.O Box : 13321 - Ministry Of Labor Old Building, 230 St. C.Ring Road 2 nd Floor  
 CONTACT PERSON: Mr. Mahmoud Zahran (Mob: 66608966)  
 PHONE / FAX: +974 4003104  
 AREAS/SCOPE: LIFTS & ELEVATORS

Attached Documents:  
 Sample / prototype  Technical Documents  Tests  Certificates  Others:  
 The above sub-contractor SUB-CONTRACTOR has been checked for conformance with drawings and specifications for this project and deviations from plans and specifications have been noted on the material or listed in the remarks below.

Prepared By: Mohammed Aljaz Submitted By: Faisal Hamad Al Gammal Received By: Camille  
 QA/QC Engineer Project Manager (Owner's Representative) Date: 20-Jan-2021

APPROVED  APPROVED AS NOTED  REVISE & RESUBMIT  REJECTED

NOTES:  
 - SUBJECT FOR THE SUBMITTAL OF MATERIALS & STOP DRAWING AS PER PROJECT REQUIREMENT  
 approved as noted

CONSULTANT ENGINEER REP: DATE: CONSULTANT PROJECT MANAGER: DATE:

SDO Issue Date: March 2020 Page 1 of 1 Ref No: FIS/UPP/02

**الفجر الجديد للإستشارات الهندسية**  
**Al Fajr Al Jadeed Consultant Engineering**

MATERIAL SUBMITTAL

Date: 01/04/24 Submittal No.:  
 Project Name: Residential Building B+G+H+4 Alwakra  
 Customer: Al Balam Contracting Company

DESCRIPTION  
 Material Submittal for 1 unit of LGS Board  
 Drawing Ref. Specs. Ref. BOQ Ref. S.S. Ref.

Attachment:  Literature  Test Certificates  Samples

MANUFACTURER/SUPPLIER  
 Name: LGS Elevator Korea  
 Address: China  
 Local Agent: Al-Rayan Elevator & Escalator Company  
 Post Box: 13321 Telephone No.: 40110104 Fax No.:

DELIVERY  
 Production Period: 50 days  
 Delivery Ex. Works: 30 days  
 Total Delivery Time: 90 days

CONSULTANT COMMENTS  
 (1) Approved  (2) Review & Resubmit   
 (3) Approved as Noted  (4) Add'l Info Required   
 (5) Rejected  (6) Sample Test Required

Signature: Date:

CUSTOMER/ENGINEERING DEPARTMENT COMMENTS  
 Signature: Date:

Approval by the Consultant and/or the Customer shall not relieve the Contractor of his obligation under the Contract, and the Contractor shall be solely responsible for the soundness and correctness of the submitted materials and documents.

Tel.: +974 447 302 40 - Fax: +974 447 859 23 هاتف: +٩٧٤ ٤٤٧ ٣٠٢ ٤٠ - فاكس: +٩٧٤ ٤٤٧ ٨٥٩ ٢٣  
 P.O.Box : 63843 - Doha, Qatar ص.ب: ٦٣٨٤٣ - الدوحة - قطر  
 E-mail: alfajr\_doha@hotmail.com alfajr\_doha@hotmail.com بريد إلكتروني: alfajr\_doha@hotmail.com



# PROJECTS REFERENCES

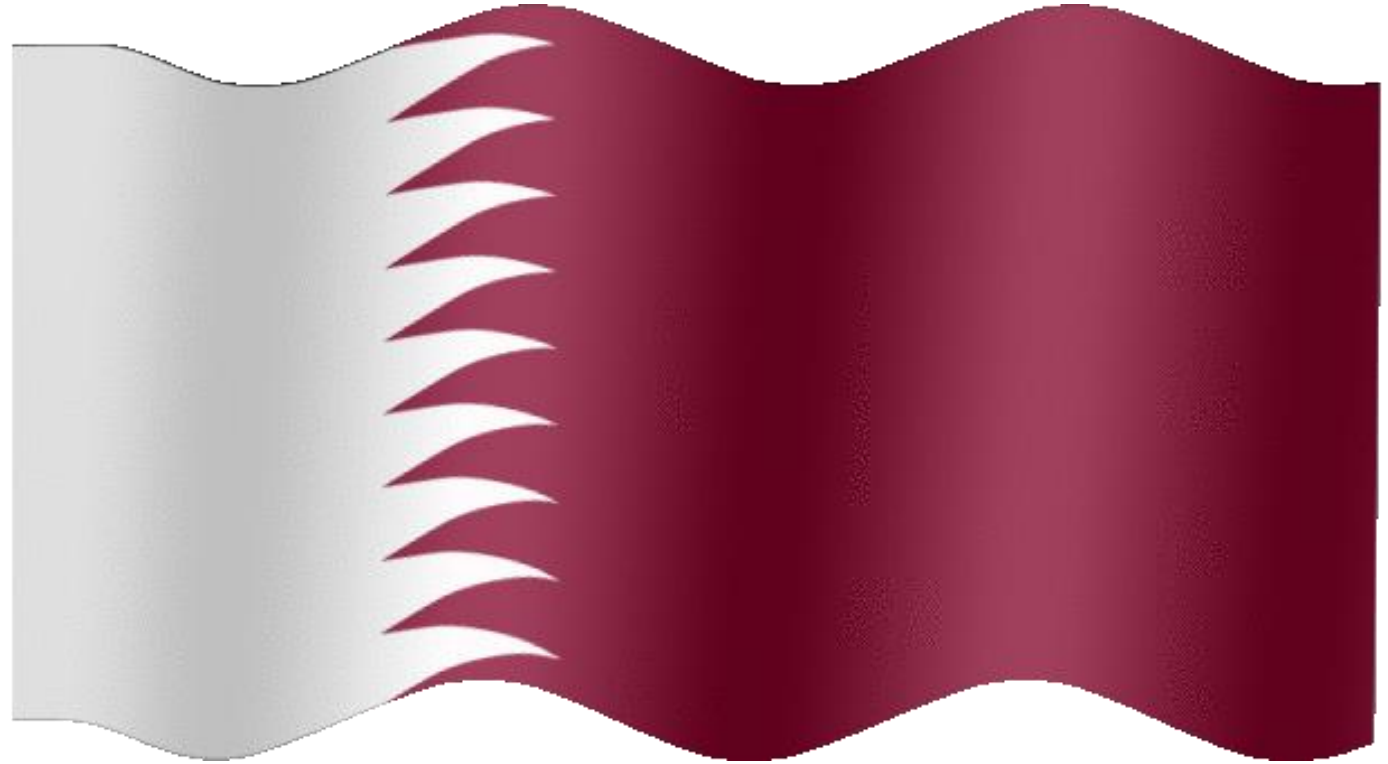
Executed by Our Team  
Members



الريان  
AL-RAYAN

للمصاعد والسلالم المتحركة  
Elevators & Escalators

**QATAR**





**3 Elevator**  
**630 Kg**  
**13 Floors**



**2 Elevator**  
**630 Kg**  
**13 Floors**





**2 Elevator**  
**800 Kg**  
**9 Floors**

**4 Elevator**  
**630 Kg**  
**4 Floors**





الريان  
AL-RAYAN





الريان  
AL-RAYAN







الريان  
AL-RAYAN



# List of Some Projects in Qatar



الريان  
AL-RAYAN

S/No.	Main Contractor	Owner	Project Name / Types Of Villa	Elevator Qty	Floor & Stops
1	Md. Jassem Eissa Al Kebsy	Md. Jassem Eissa Al Kebsy	Private Villa	1 Elevator	4 / 4
2	Amad Constructionw.L.L.	Amad Constructionw.L.L.	Residentila Building	2 Elevator	8 / 8
3	Amad Constructionw.L.L.	Amad Constructionw.L.L.	Residentila Building	2 Elevator	8 / 8
4	Ain Shams For Construction & Builders W.L.L.	Yousef Md Al Kuwari	Residentila Building	1 Elevator	5 / 5
5	Fimco International For Cont. & Trdae W.L.L.	Shk. Jabr Abdulaziz Al Thani	Residentila Building	2 Elevator	5 / 5
6	Fimco International For Cont. & Trdae W.L.L.	Shk. Jabr Abdulaziz Al Thani	Residentila Building	2 Elevator	5 / 5
7	Fahad Salem Al Hajri	Fahad Salem Al Hajri	Private Villa	1 Elevator	3 / 3
8	Mr. Ahmed Mohamed Nasser Al Mohandey	Ahmed Mosaad Al Mohandey	Residentila Building	1 Elevator	4 / 4
9	Khalifa Al Misslimani	Khalifa Al Misslimani	Private Villa	1 Elevator	3 / 3
10	Rashed Al Unaizy	Rashed Al Unaizy	Private Villa	1 Elevator	3 / 3
11	Matlaa Al Shamis Contracting Co.	Matlaa Al Shamis Contracting Co.	Residentila Building	1 Elevator	6 / 6
12	Jassem For Engineering & Contracting	Jamil Matar	Private Villa	1 Elevator	3 / 3
13	Plaza Trading & Contracting Co. W.L.L.	Plaza Trading & Contracting Co. W.L.L.	Residentila Building	1 Elevator	5 / 5
14	Ali Al Hail - Najma	Ali Al Hail - Najma	Residential Building	2 Elevator	7 / 7
15	Ali Al Hail -Khalifa City	Ali Al Hail -Khalifa City	Private Villa	1 Elevator	4 / 4
16	Ali Al Hail - Al Khor Jasr	Ali Al Hail - Al Khor Jasr	Private Villa	1 Elevator	4 / 4
17	Ali Al Hail - Al Khor Ali	Ali Al Hail - Al Khor Ali	Private Villa	1 Elevator	4 / 4
18	Mr. Abdullah Al Malkhy	Mr. Abdullah Al Malkhy	Private Villa	1 Elevator	3 / 3
19	Redline For Contracting	Redline For Contracting	Commercial Building	2 Elevator	13 / 13
20	Ain Shams For Construction & Builders W.L.L.	Mr. Essa Saqr Al Merhiki	Private Villa	1 Elevator	4 / 4
21	HassanESCO Trading & Contracting Co.	HassanESCO Trading & Contracting Co.	Residential Building	3 Elevator	13 / 13
22	Helcon Qatar	Helcon Qatar	Residentila Villa	1 Elevator	4 / 4
23	Khaled Fakhro	Khaled Fakhro	Private Villa	1 Elevator	3 / 3
24	SAK Trading & Contracting	SAK Trading & Contracting	Residential Building	1 Elevator	5 / 5



S/No.	Main Contractor	Owner	Project Name / Types Of Villa	Elevator Qty	Floor & Stops
25	Amad Constructionw.L.L.	Amad Constructionw.L.L.	Resedential Building	1 Elevator	4 / 4
26	Soud Ali Al Ansari	Soud Ali Al Ansari	Private Villa	1 Elevator	3 / 3
27	Al Bader Group Co. W.L.L.	Al Bader Group Co. W.L.L.	Commercial Building	2 Elevator	15 / 15
28	Sanken Overseas Trading & Contracting Co. W.L.L.	Sanken Overseas Trading & Contracting Co. W.L.L.	Resedential Building	3 Elevator	4 / 4
29	Alpha Gulf For Construction & Development W.L.L.	Alpha Gulf For Construction & Development W.L.L.	Private Villa	2 Elevator	3 / 3
30	Hassanesco Trading & Contracting Co.	Hassanesco Trading & Contracting Co.	Private Villa	1 Elevator	4 / 4
31	Construction & Reconstruction Eng. Co.	Dora - Old Airport	Commercial & Office Building	10 Elevator	5 / 5
32	Dr. Hamad Md. Al Jaber	Dr. Hamad Md. Al Jaber	Private Villa	1 Elevator	4 / 4
33	Md. Hassan Al Mohannadi	Md. Hassan Al Mohannadi	Private Villa	1 Elevator	4 / 4
34	Millenium Trading & Contracting Co.	Md. Al Jaber	Private Villa	1 Elevator	3 / 3
35	Khaled Ahmed Al Muraikhi	Khaled Ahmed Al Muraikhi	Private Villa	1 Elevator	2 / 2
36	Eid Bin Mohamed For Trading & Contracting Co. W.L.L.	Eid Bin Mohamed For Trading & Contracting Co. W.L.L.	Private Villa	2 Elevator	5 / 5
37	Al Mana Engineering And Contracting	Al Mana Engineering And Contracting	Residential Building	1 Elevator	7 / 7
38	Bab Ishtar Trading & Construction W.L.L.	Bab Ishtar Trading & Construction W.L.L.	Residential Building	2 Elevators	11 / 11
39	Nozoom Al Beena Trading And Contracting Co.	Nozoom Al Beena Trading And Contracting Co.	Residential Building	1 Elevator	6 / 6
40	Ring Trading & Contracting Co.	Hashim Abdulla Al Sada - Khaled Ghad	Private Villa	1 Elevator	4 / 4
41	Thamco Contracting Establishment	Thamco - Al Waker	Private Villa	3 Elevator	3 / 3
42	Thamco Contracting Establishment	Shk. Jaber Abdulaziz	Residential Building	2 Elevator	9 / 9
43	Jasr For Trading And Contracting Co. W.L.L.	Jasr For Trading And Contracting Co. W.L.L.	Private Villa	1 Elevator	4 / 4
44	Nozoom Al Beena Trading And Contracting Co.	Nozoom Al Beena Trading And Contracting Co.	Private Villa	1 Elevator	3 / 3
45	Sultan Construction Group	Sultan Construction	Office Building	4 Elevator	8 / 8
46	Abdullateef Al Sada	Abdullateef Al Sada	Private Villa	1 Elevator	3 / 3



الريان  
AL-RAYAN

S/No.	Main Contractor	Owner	Project Name / Types Of Villa	Elevator Qty	Floor & Stops
47	Makeen Trading & Contracting W.L.L.	Makeen Trading & Contracting W.L.L.	Residential Building	1 Elevator	4 / 4
48	Khalifa Ahmed Sultan Al Thani Enterprises	Shk. Khalifa Al Thani	Private Villa	2 Elevator	5 / 5
49	Hassan Al Kaabi For Contracting Co. W.L.L.	Hassan Al Kaabi	Residential Building	4 Elevator	9 / 9
50	Al Attiyah Architectural Group Holding	Al Attiyah Architectural Group Holding	Commercial Building	1 Elevator	4 / 4
51	Ahmed Noami	Ahmed Noami	Private Villa	1 Elevator	4 / 4
52	Shk. Nasser Abdullah	Shk. Nasser Abdullah	Private Villa	4 Elevator	5 / 5
53	Shk. Khalifa Abdulla Nasser Al Attiya	Shk. Khalifa Abdulla Nasser Al Attiya	Private Villa	1 Elevator	4 / 4
54	Abdulla Al Kawari Villa	Abdulla Al Kawari Villa	Private Villa	1 Elevator	3 / 3
55	Jassem For Engineering & Contracting	Jassem For Engineering & Contracting	Private Villa	1 Elevator	2 / 2
56	Horizon Arabia Group W.L.L.	Horizon Arabia Group W.L.L.	Residential Building	2 Elevators	11 / 11
57	HassanESCO Trading & Contracting Co.	HassanESCO Trading & Contracting Co.	Residential Building	1 Elevator	4 / 4
58	HassanESCO Trading & Contracting Co.	HassanESCO Trading & Contracting Co.	Residential Building	2 Elevator	9 / 9
59	United Jewel Trading & Contracting Co.	United Jewel Trading & Contracting Co.	Residential Building	1 Elevator	5 / 5
60	Qatar & Gulf Enterprises W.L.L.	Qatar & Gulf Enterprises W.L.L.	Residential Building	2 Elevator	9 / 9
61	Al Rahma For Contracting Co.	Al Rahma For Contracting Co.	Residential Building	1 Elevator	7 / 7
62	Mohamed Hassan Al Hail	Mohamed Hassan Al Hail	Private Villa	1 Elevator	4 / 4
63	Omer Al Jaber	Omer Al Jaber	Private Villa	1 Elevator	3 / 3
64	Khalifa Ahmed Sultan Al Thani Enterprises	Khalifa Sultan Al Thani	Private Villa	2 Elevator	4 / 4
65	Establishment Al-fares Engineering For Contracting Co. W.L.L.	Establishment Al-fares Engineering For Contracting Co. W.L.L.	Residential Building	2 Elevators	10 / 10
66	Amad Constructionw.L.L.	Amad Constructionw.L.L.	Residential Building	1 Elevator	6 / 6

S/No.	Main Contractor	Owner	Project Name / Types Of Villa	Elevator Qty	Floor & Stops
67	21th Century Projects Co. W.L.L.		Residential Building	1 Elevator	6 / 6
68	Amad Constructions W.L.L.	Dr. Yousef Abd Al Lateef	Residential Building	1 Elevator	4 / 4
69	Qotoof Contracting Co.	Mr. Adel Mohamed Al Motawaa	Residential Building	1 Elevator	4 / 4
70	Industrial Services Group	Shk Khalifa Bin Ahmed Bin Jassim Al Thani	Residential Flat Building	2 Elevators	5 / 5
71	Qotoof Contracting Co.	Mr. Khalid Eisa Al Mannai	Residential Building	1 Elevator	5 / 5
72	Qotoof Contracting Co.	Mr. Khalid Eisa Al Mannai	Residential Building	1 Elevator	4 / 4
73	Qatar Visitor Guide Trading & Contracting Co.	Mr. Khalid Eisa Al Mannai	Residential Building	1 Elevator	5 / 5
74	Foulaz Trading Co.	Shk Nawaf Bin Jassem Bin Jaber Al Thani	Commercial Villa	2 Elevators	3 / 3
75	Industrial Services Group	Shk Khalifa Bin Ahmed Bin Jassim Al Thani	Office Building	1 Elevator	4 / 4
76	Mr. Hamad Al Medadi	Mr. Hamad Al Medadi	Private Villa	1 Elevator	3 / 3
77	Mr. Hamad Al Medadi	Mr. Hamad Al Medadi	Private Villa	1 Elevator	3 / 3
78	Industrial Services Group	Shk Khalifa Bin Ahmed Bin Jassim Al Thani	Residential Flat Building	1 Elevator	7 / 7
79	Buiding & Engineering Bureau Trading Co.	Mr. Abdulla Qaied Al Emadi	Residential Building	1 Elevator	6 / 6
80	Ibrahem Al Al Medadi	Mr. Ibrahem Al Medadi	Private Villa	1 Elevator	3 / 3
81	Al Taweem For Contracting Co.	Mr. Hassan Al Kaabi	Residential Building	1 Elevator	6 / 6
82	Ezdan Trading & Contracting			1 Elevator	4 / 4
83	El Emara Al Islamia Trading & Contracting Co.			1 Elevator	2 / 2
84	Sunnin Trading & Contracting Co.		Residential Building	1 Elevator	5 / 5
85	Thamco Contracting Establishment		Residential Building	1 Elevator	5 / 5
86	Badr El Hazek Qatar W.L.L	Mr. Saeed Yasser Al Ali	Commercial & Residential Building	2 Elevators	10 / 10
87	Germin Trading & Contracting	Mr. Moubark Saleh Al Hagri	Residential Building	1 Elevator	4 / 4
88	Hamad Ali Abd El Malek	Hamad Ali Abd Malek	Residential Villa	1 Elevator	4 / 4
89	Bab Isthar Trading & Construction Co. W.L.L.		Residential Building	5 Elevators	12 / 12
90	Bab Isthar Trading & Construction Co. W.L.L.		Residential Building	2 Elevator	9 / 9
91	El Emara Al Islamia Trading & Contracting Co.		Residential Building	4 Elevator	9 / 9
92	Mr. Ali Mahdi Khalaf	Mr. Ali Mahdi Khalaf	Residential Villa	1 Elevator	4 / 4





الريان  
AL-RAYAN

للمصاعد والسلالم المتحركة  
Elevators & Escalators

# Company Document



وزارة التجارة والصناعة  
Ministry of Commerce and Industry  
دولة قطر - State of Qatar

Registration and Commercial  
Licenses Department

إدارة التسجيل  
والتراخيص التجارية

مستخرج بعض بيانات السجل التجاري

الأنشطة التجارية

الرقم	إسم النشاط	الرقم	إسم النشاط
4329100	تركيب المعاهد و السور الناقله و الارضه	4773804	التجارة في المعاهد والسلاالم المتحركة

Page 2 of 2  
رقم السجل : 137614



تشهد غرفة تجارة وصناعة قطر بان المنشأة المذكورة اعلاه سجلت لدينا

Qatar Chamber certifies that the above mentioned establishment has been registered



وزارة التجارة والصناعة  
Ministry of Commerce and Industry  
دولة قطر - State of Qatar

Registration and Commercial  
Licenses Department

إدارة التسجيل  
والتراخيص التجارية

مستخرج بعض بيانات السجل التجاري

تاريخ الطباعة: 2024/09/08



رقم التسجيل الضريبي:	5000437244	رقم السجل التجاري:	137614
السمة التجارية:	07/09/2026	الريان للمساعد والسلام	09/09/2019
تاريخ انتهاء السجل:	500000	شركة ذات مسؤولية محدودة	
رأس المال:	قطر	الشكل القانوني:	نشط
جنسية المنشأة:	17-1833-22	حالة السجل:	0
رقم قيد المنشأة:		عدد الفروع:	

معلومات الاتصال

أرقام الاتصال:

صندوق البريد:

المالك

الأسم	رقم الإثبات	رقم السجل	الجنسية	الحالة
حمد عبدالرحمن عمير الجبر النعيمي	28363403656		قطر	

المدرء (المخولون بالتوقيع)

الأسم	رقم الإثبات	رقم السجل	الجنسية	الصفة (الصلاحية)
حمد عبدالرحمن عمير الجبر النعيمي	28363403656		قطر	مالك- ( صلاحيات كاملة ومطلقة - مدير)
محمود حاتم عبدالعزيز السيد زهران	28281809958		مصر	مدير- ( صلاحيات كاملة ومطلقة - مدير)

Page 1 of 2

رقم السجل : 137614



وزارة التجارة والصناعة  
Ministry of Commerce and Industry  
دولة قطر - State of Qatar

إدارة التسجيل والتراخيص التجارية  
السجل التجاري والتراخيص التجارية

تشهد غرفة تجارة وصناعة قطر بان المنشأة المذكورة اعلاه سجلت لدينا  
Qatar Chamber certifies that the above mentioned establishment has been registered

STATE OF QATAR  
MINISTRY OF INTERIOR  
General Directorate of Passport



دولة قطر  
وزارة الداخلية  
الإدارة العامة للجوازات

بطاقة قيد المنشأة Establishment Card

Est. ID	17-1833-22	رقم قيد المنشأة
اسم المنشأة : الريان للمساعد والسلام		
Est. Name :	AL-RYAN LLMSAD WALSLALM	
Sector :	SPECIAL	القطاع : خاص
First Issue :	2019-10-01	تاريخ اول اصدار :
Expiry Date :	2024-09-19	تاريخ الصلاحية :
مدير عام الادارة العامة للجوازات		

المفوضين Authorizers

رقم الوثيقة	الاسم	التوقيع
28281809958	محمود حاتم عبدالعزيز السيد زهران	
28363403656	حمد عبدالرحمن عمير الجبر النعمي	

تعليمات Cards عدد البطاقات Instruction

• على من يجد هذه البطاقة ان يقوم بتسليمها الى اي مركز للشرطة  
• Whoever finds this card should deliver it to any police station.





**THANK YOU**

**LG** Rise

**FUJFI**<sup>®</sup>